



Submittal #004:

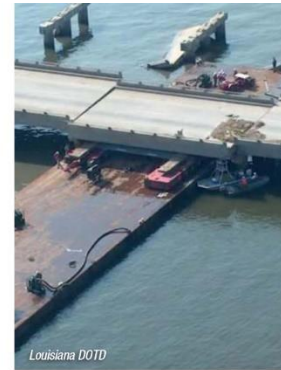
LADOTD PERSPECTIVE ON RESILIENT AND SUSTAINABLE BRIDGES

Abstract:

After experiencing major bridge damages from Hurricane Katrina in 2005, LADOTD Bridge Design Section initiated a research project to evaluate all coastal bridges that are vulnerable to tropical storms and hurricanes and develop wave parameters that can be used to determine surge/impact forces in future designs. This presentation will provide overview of this study. In addition, an overview of the ongoing [NCHRP 23-32](#) project will be presented. The purpose of this NCHRP project is to develop the AASHTO Highway Asset Risk and Resilience Manual.

Speaker:

Zhengzheng “Jenny” Fu
LADOTD Bridge Design
Administrator
Zhengzheng.fu@la.gov
M: 225-938-4669



Bio:

Zhengzheng “Jenny” Fu received a MS degree in Civil Engineering from Purdue Univ. in 1991 and BS degree in Mechanical Engineering from Huazhong Univ. of Science and Tech. of China in 1984. Ms. Fu has over 35 years of civil/structural and mechanical engineering experiences. Ms. Fu is the Bridge Design Administrator in Louisiana Department of Transportation and Development (LADOTD) and responsible for all bridge design related activities in LADOTD. Ms. Fu is Louisiana’s voting member in the AASHTO Committee on Bridges and Structures (COBS). She serves as the Chair for COBS technical committee T-8 (Movable Bridges), and a member in T-10 (Concrete) and T-11 (Research). She also serves in several NCHRP project panels.